



HR ESTATE AGENTS

3 Bedrooms

House - Terraced

Guide Price

£230,000

Located in

Southam





Meldrum Court

Southam | | CV47 2UF



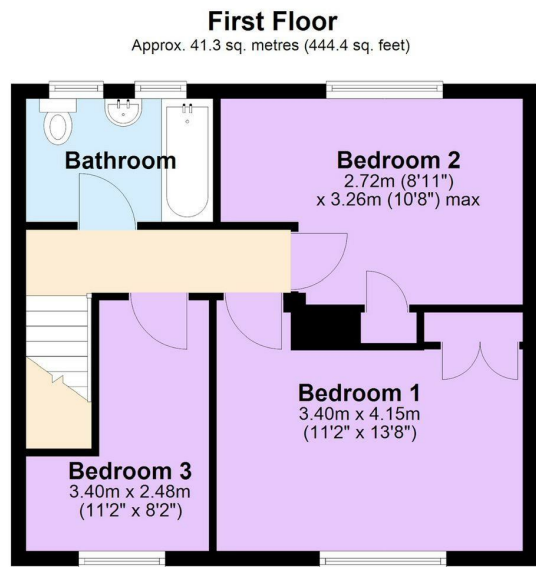
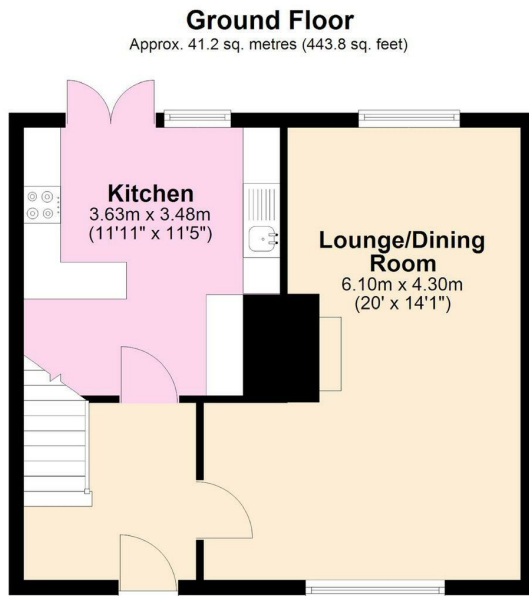
Zacharias Ermogenous is proud to present this stunning home nestled in the heart of the peaceful and well-connected village of Temple Herdewyke, this beautifully presented three-bedroom semi-detached home combines generous living space with a modern finish and a welcoming atmosphere throughout.

Meldrum Court

£230,000 Freehold



- Perfect First Time Home
- Private Rear Garden
- Village Location
- End of Terrace
- 3 Bedrooms
- Excellent transport links M40, Southam, Banbury and Leamington Spa
- Allocated parking, plus additional parking near by



Total area: approx. 82.5 sq. metres (888.2 sq. feet)

Council Tax Band B

Local Authority

Agents Note: Whilst every care has been taken to prepare these particulars, they are for guidance purposes only. All measurements are approximate and are for general guidance purposes only and whilst every care has been taken to ensure their accuracy, they should not be relied upon and potential buyers/tenants are advised to recheck the measurements.

Energy Efficiency Rating		
	Current	Potential
Very energy efficient - lower running costs		
(92 plus) A		
(81-91) B		
(69-80) C		
(55-68) D	59	
(39-54) E		
(21-38) F		
(1-20) G		
Not energy efficient - higher running costs		
England & Wales	EU Directive 2002/91/EC	

Number Three Siskin Drive
Coventry
CV3 4FJ


HR ESTATE AGENTS